

JOB REFERENCE _____ /s/ _____

SUBMITTAL DATA:

Qty	Platform/Sensor	Cable Length	Display Increments
		FT	
		M	
		FT	
		M	
		FT	
		M	
		FT	
		M	

WEIGHT: 1,050 lbs/476 kgs
(palletized for shipment)

WIZARD INDICATOR MODEL NO: _____

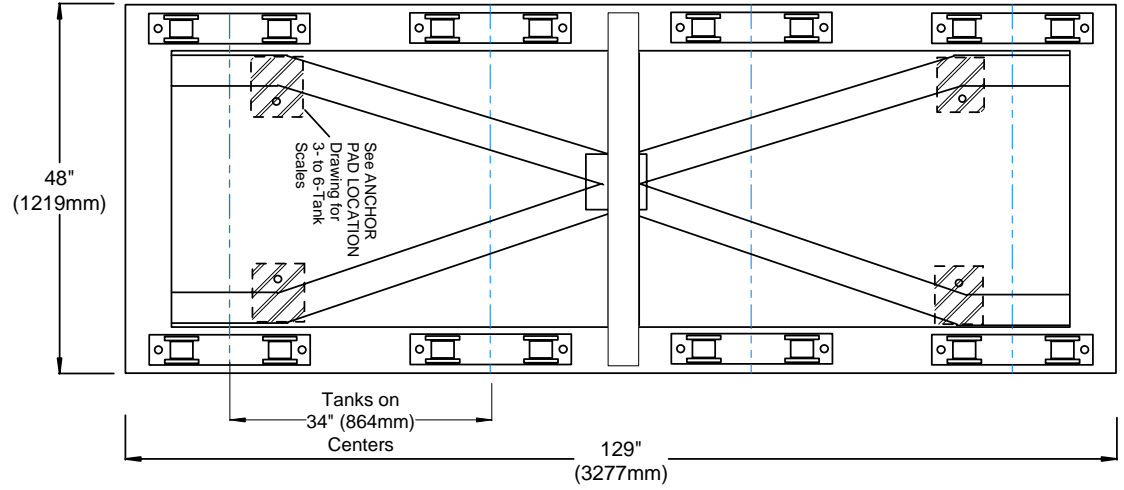
4-20mA OUTPUTS _____

RELAYS _____ DRY CONTACT / SOLID STATE
N.O. / N.C.

OTHER OPTIONS: _____

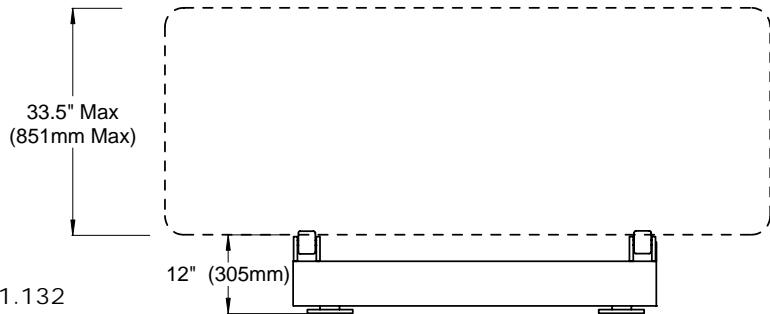
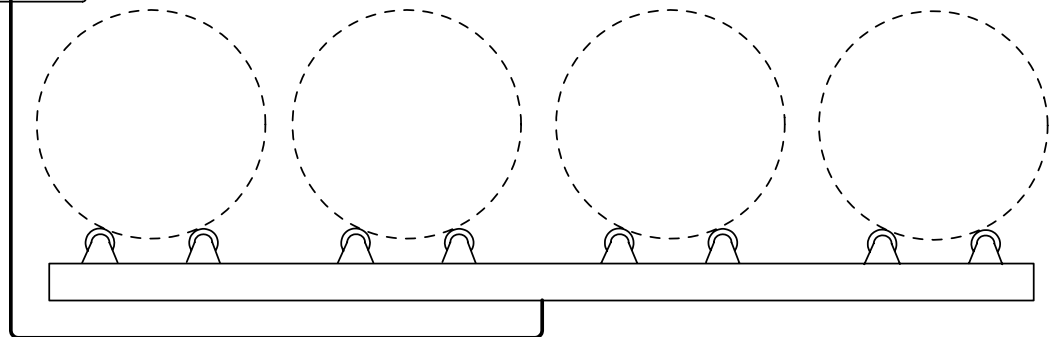
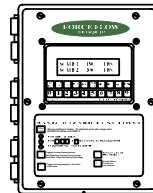
Model Number (Frame and Load Cell)
 DR160 (16,000 lbs)
 DR80K (8,000 kg)

Model Number (Wizard 4000 Indicator)
 4000-1 1-Channel
 4000-2 2-Channel
 4000-3 3-Channel
 4000-4 4-Channel



NOTE: Use 1/2" x 1-1/2" (13mm x 38mm) Anchor Bolts

RECOMMENDATION: 12" (305mm) minimum pad be used for each foot. DO NOT PREPOUR ANCHOR BOLTS. Use frame as template to avoid binding.



1150-D Burnett Ave, Concord, CA 94520 USA
 1-800-893-6723 US & Canada, Fax: 925-686-6713
 www.forceflow.com / info@forceflow.com

File: T4O&M/TON WIZWIZ4TANK.tcw (J21.pdf) (WEB: TON4WIZ.pdf)
 EMAIL/DRAWINGS/TON/_WIZ4TNK.PDF

**ELECTRONIC 4-TANK CHLOR-SCALE
 WITH WIZARD INDICATOR
 For Ton Containers (16,000 lb. Capacity)**

Drawn by: SLP
 Date: 09/13/00
 Revised: 05/09/02
 Scale: NONE

Drawing Number
30283