

JOB REFERENCE _____ /s/ _____

SUBMITTAL DATA:

Qty	Platform/Sensor	Cable Length	Display Increments
		FT	
		M	
		FT	
		M	
		FT	
		M	

WIZARD INDICATOR MODEL NO: _____

4-20mA OUTPUTS _____

RELAYS _____ DRY CONTACT / SOLID STATE
N.O. / N.C.

OTHER OPTIONS: _____

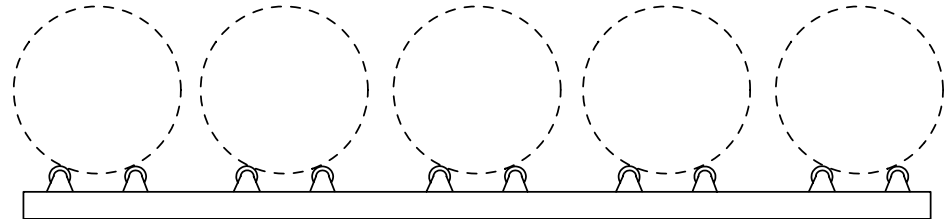
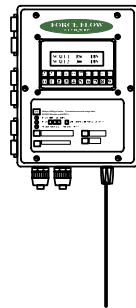
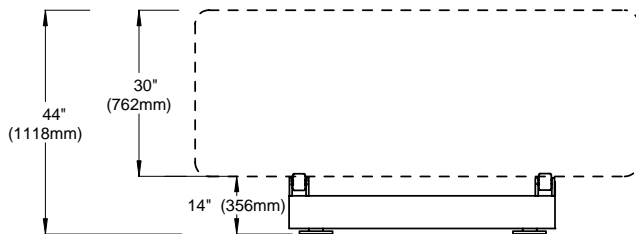
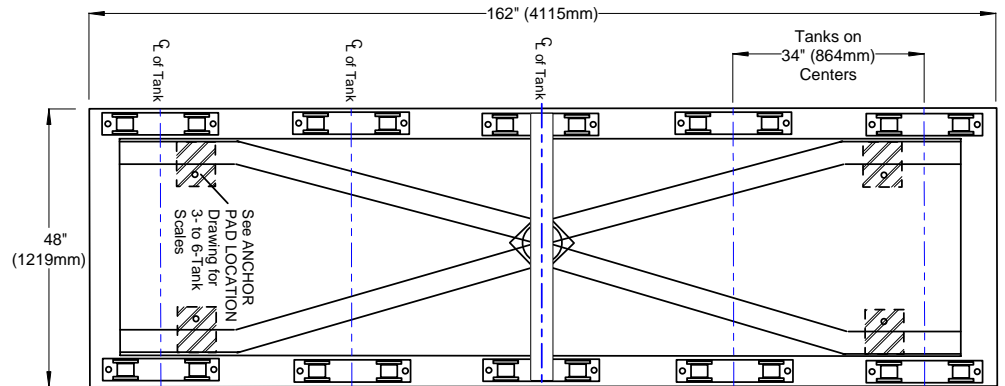
NOTE: Use 5/8" x 1-1/2" (16mm x 38mm) Anchor Bolts

RECOMMENDATION: 12" (305mm) minimum pad be used for each foot. DO NOT PREPOUR ANCHOR BOLTS. Use frame as template to avoid binding.

WEIGHT: 1890 lbs/857 kgs
(palettized for shipment)

Model Number (Frame and Load Cell)
DR200 (20,000 lbs)
DR100K (10,000 kg)

Model Number (Wizard 4000 Indicator)
4000-1 1-Channel
4000-2 2-Channel
4000-3 3-Channel
4000-4 4-Channel



W.1.133



1150-D Burnett Ave, Concord, CA 94520 USA
 1-800-893-6723 US & Canada, Fax: 925-686-6713
 www.forceflow.com / info@forceflow.com

File: T4/O&M/TON WIZWIZ 5TANK.tdw (J22.pdf) (WEB: TON5WIZ.pdf)
 EMAIL/DRAWINGS/TON/WIZ 5TANK.PDF

ELECTRONIC 5-TANK SCALE
CHLOR-SCALE with WIZARD INDICATOR
(20,000 lb. or 10,000 kg. Capacity)

Drawn by: SLP
 Date: 09/01/95
 Revised: 05/09/02
 Scale: NONE

Drawing Number
30285